





BRAMHAM CHURCH





The Vicarage Institute, Bramham.





Copyright
Brn. 6

The New Road, Bramham

Raphael Tuck & Sons
London





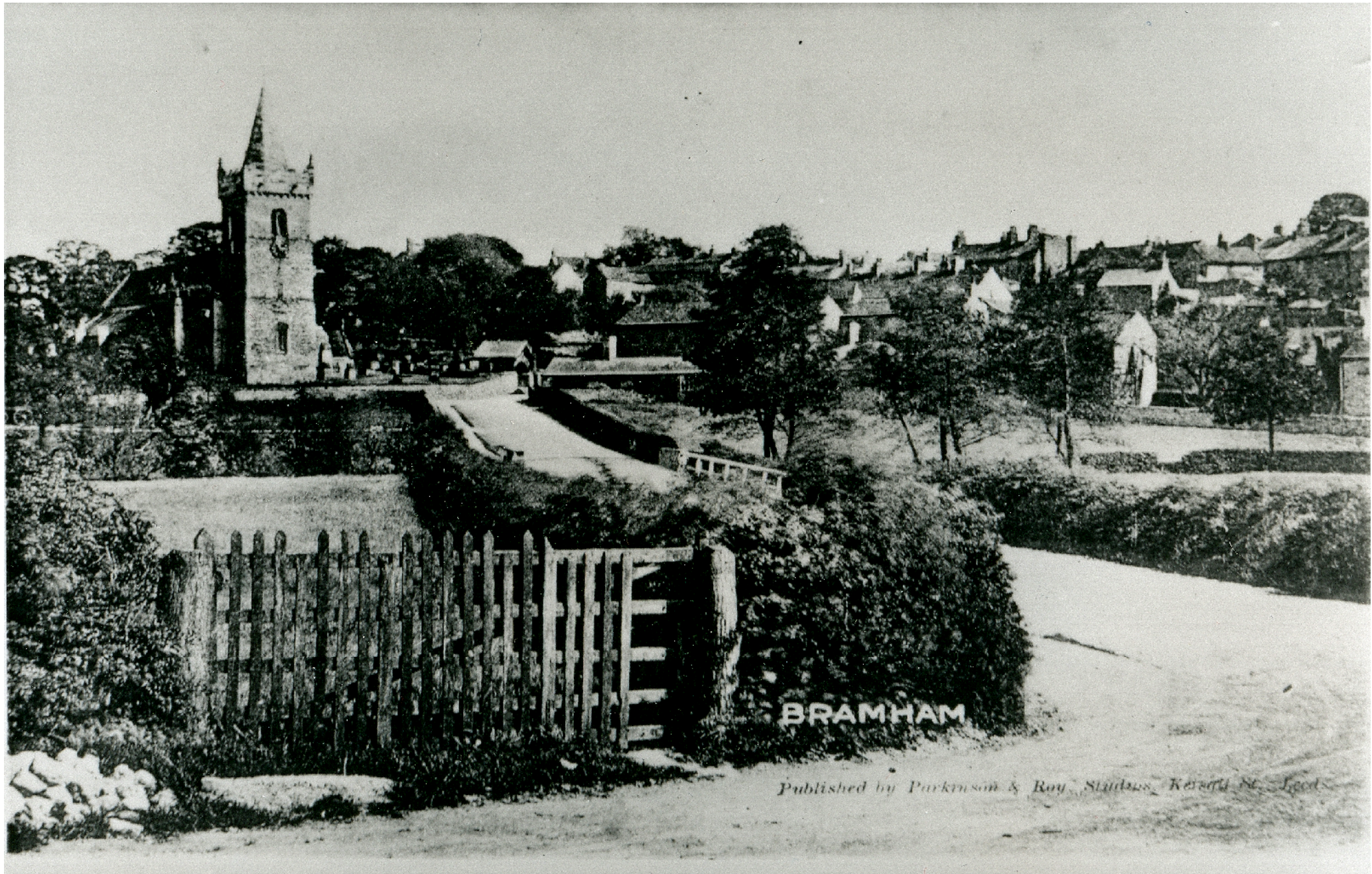
No 11.

BRAMHAM.



HILLSIDE BRAMHAM





BRAMHAM

Published by Parkinson & Roy, Stationers, Kersall St., Leeds.



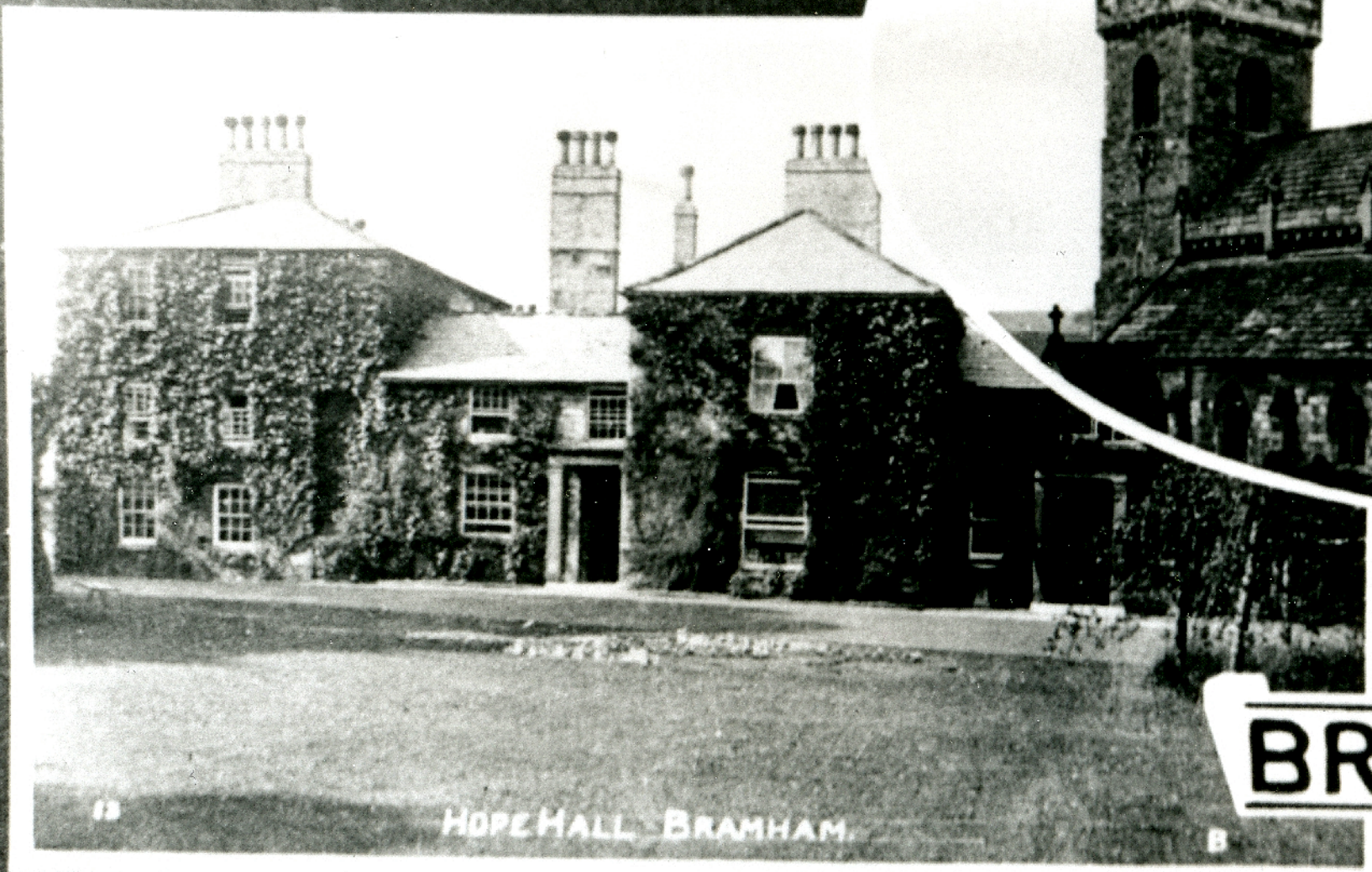








BRAMHAM FROM TENTER HILL



HOPE HALL, BRAMHAM.

13

B

BRAMH























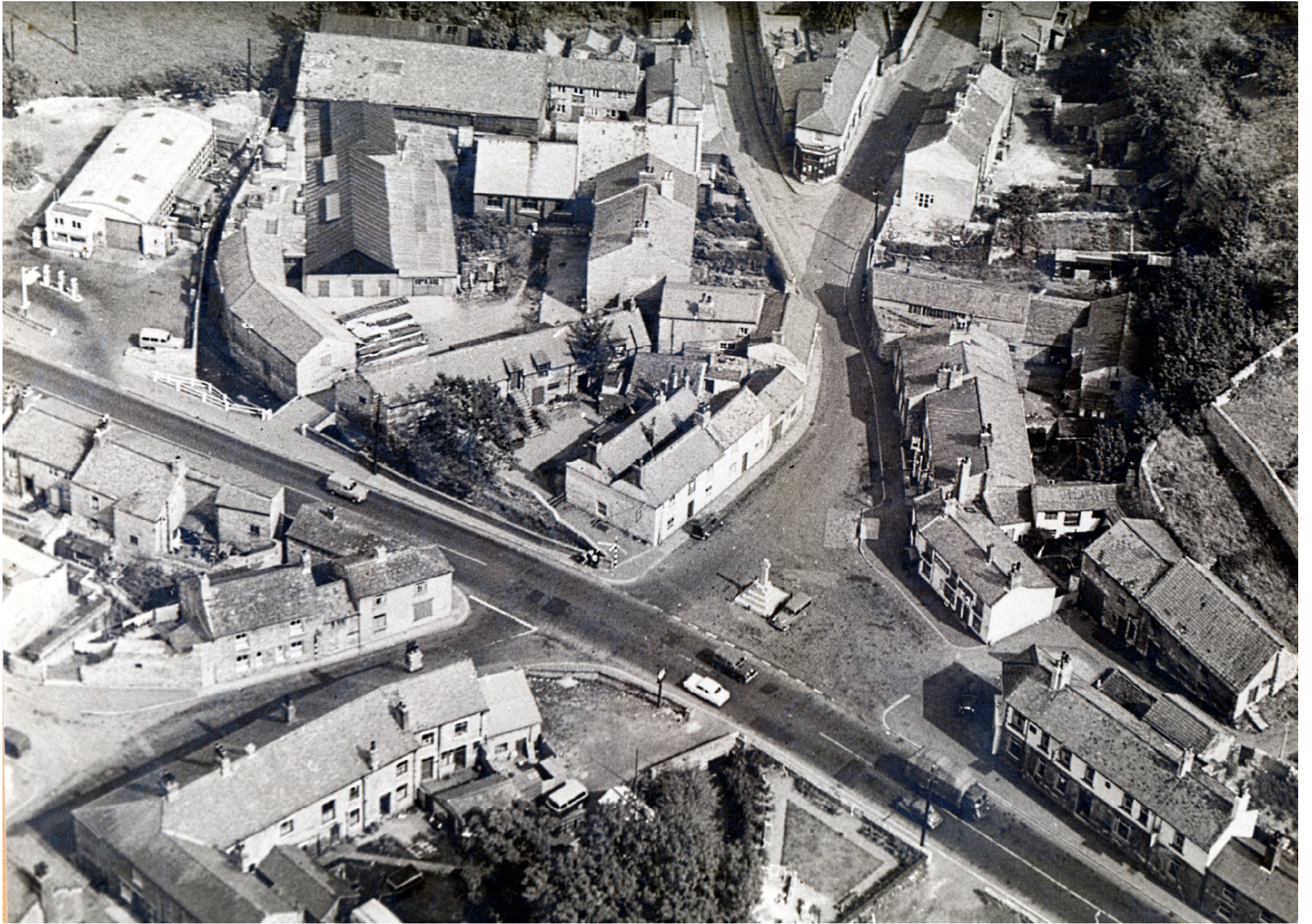












AERIAL PHOTO OF BRAMHAM VILLAGE 1959

THIS ARIAL PHOTO SHOWS THE CENTRE OF BRAMHAM WHEN THE A1 (GREAT NORTH ROAD) RAN THROUGH.

IT SHOWS THE GARAGE IN THE TOP LEFT CORNER ROUND TO THE WHITE HORSE PUBLIC HOUSE AT THE BOTTOM LEFT THEN ACROSS THE ROAD TO THE RIGHT CORNER IS THE BAY HORSE PUBLIC HOUSE , BEHIND WHICH ARE THE BUILDINGS THAT WERE DEMOLISHED AT THE BOTTOM OF ALMSHOUSE HILL. GOING TOWARDS THE TOP RIGHT HAND CORNER IS HARRY HARLANDS WITH THE PETROL PUMP, THEN THE OLD POST OFFICE AT THE FORK OF LOW WAY AND TOWN HILL. AT CENTRE TOP ARE FARM BUILDINGS AND GOING DOWN TO THE CENTRE IS BATTY'S WOOD YARD AND IN THE CENTRE THE RED LION PUBLIC HOUSE.

THIS PHOTO WAS TAKEN BY MARTIN BIGLAND AND THE PLANE WAS FLOWN BY DEREK SANDERSON BOTH BRAMHAMER'S. THE GARAGE IN THE PHOTO WAS BUILT BY RICHARD (DICK) SANDERSON - DEREKS FATHER.